

Universal Waste



**Dean Robinson, Coordinator
Household Hazardous Waste Program
NH Dept. of Environmental Services
May 26, 2015**



Universal Waste

**Hazardous, but usually
managed under
Env-Hw 1100**

Cheaper & Easier

Hazardous Wastes

Managed under Env-Hw 500

Expensive & Hard

Universal Waste

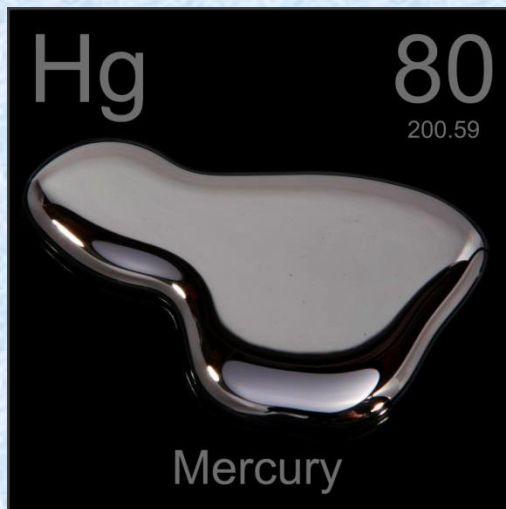
EPA's universal waste regulations streamline hazardous waste management standards for federally designated "universal wastes," which include:

- Bulbs (lamps)**
- Mercury-Containing Devices**
- Cathode Ray Tubes**
- Anti-freeze**
- Batteries**
- Pesticides**

40 CFR part 273

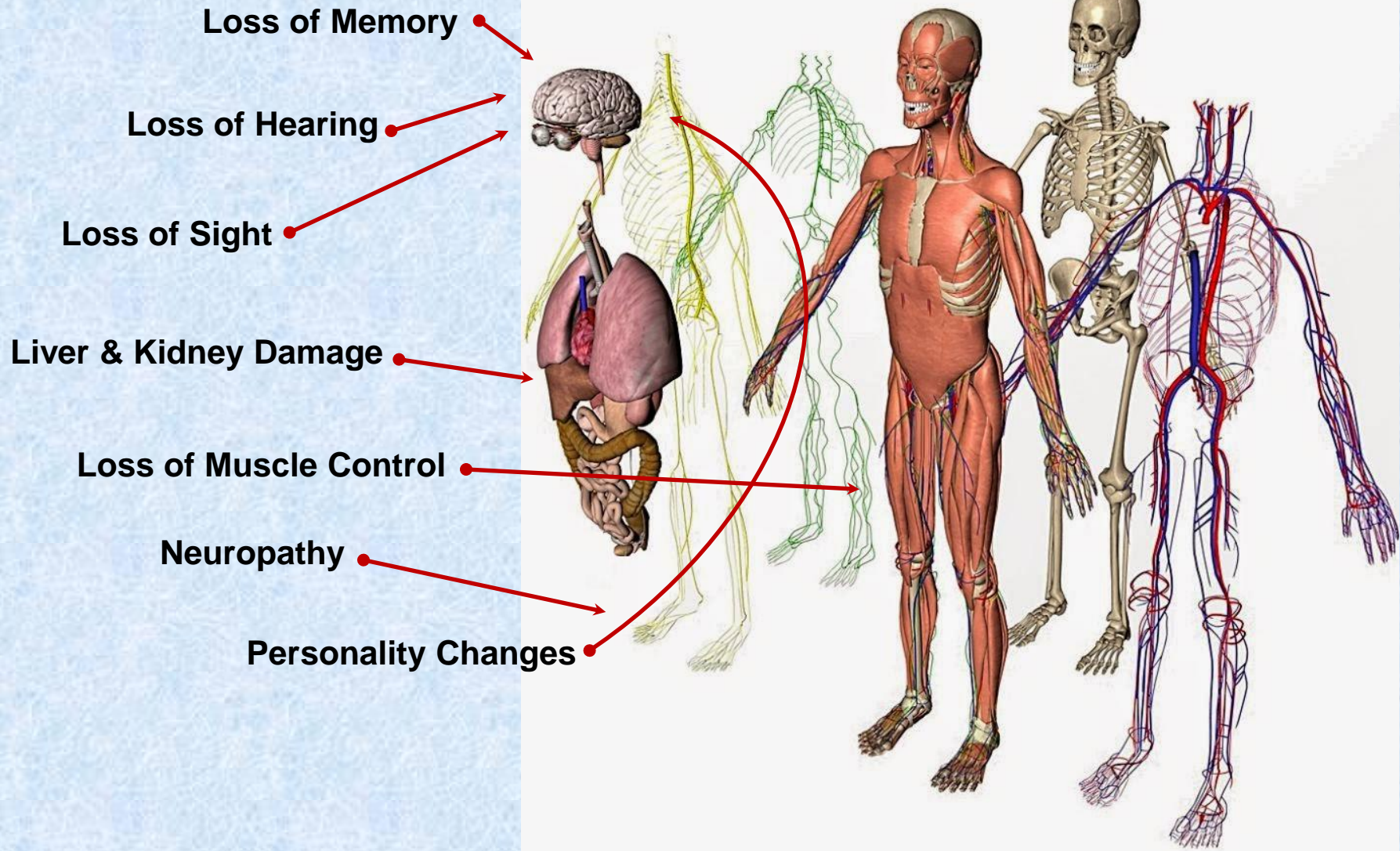
What is mercury

...and why's it such a big deal?



- **Persistent**
- **Bioaccumulative**
- **Toxic**

Symptoms and Health Effects



Going Mad- From Mercury Inhalation

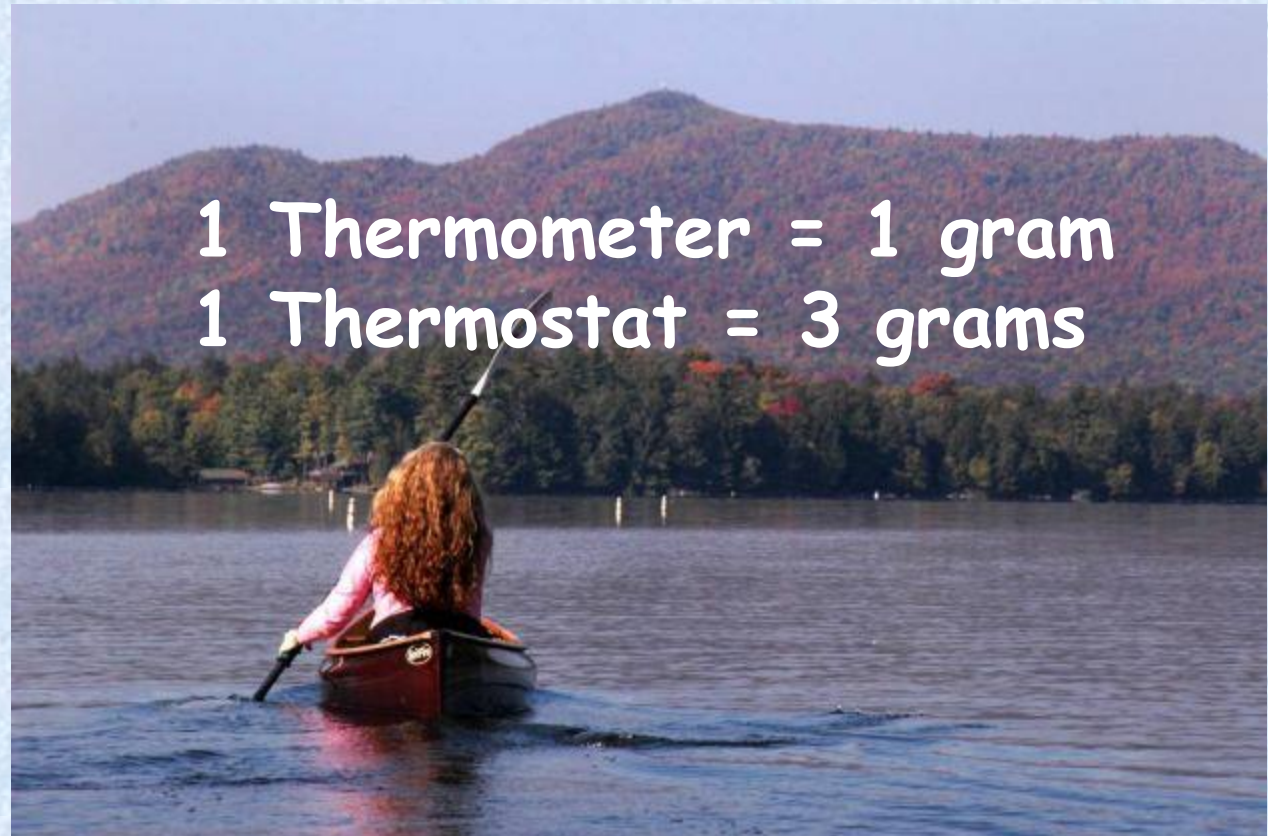


Going Mad- From Mercury Absorption



**One gram of mercury per year can
contaminate up to 20 acres of a lake...**

1 teaspoon of mercury is 70 grams

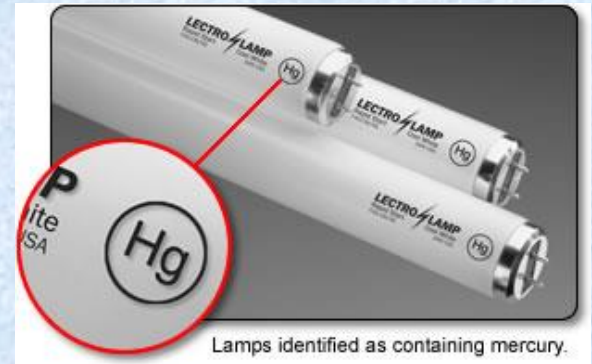


Mercury Ban



- Adopted in NH – 2008
- NH was the last state to adopt it.
- Bans devices with added mercury from being accepted at transfer stations, landfills, and incinerators.
- Requires facilities to offer options to residents.

Where is it?

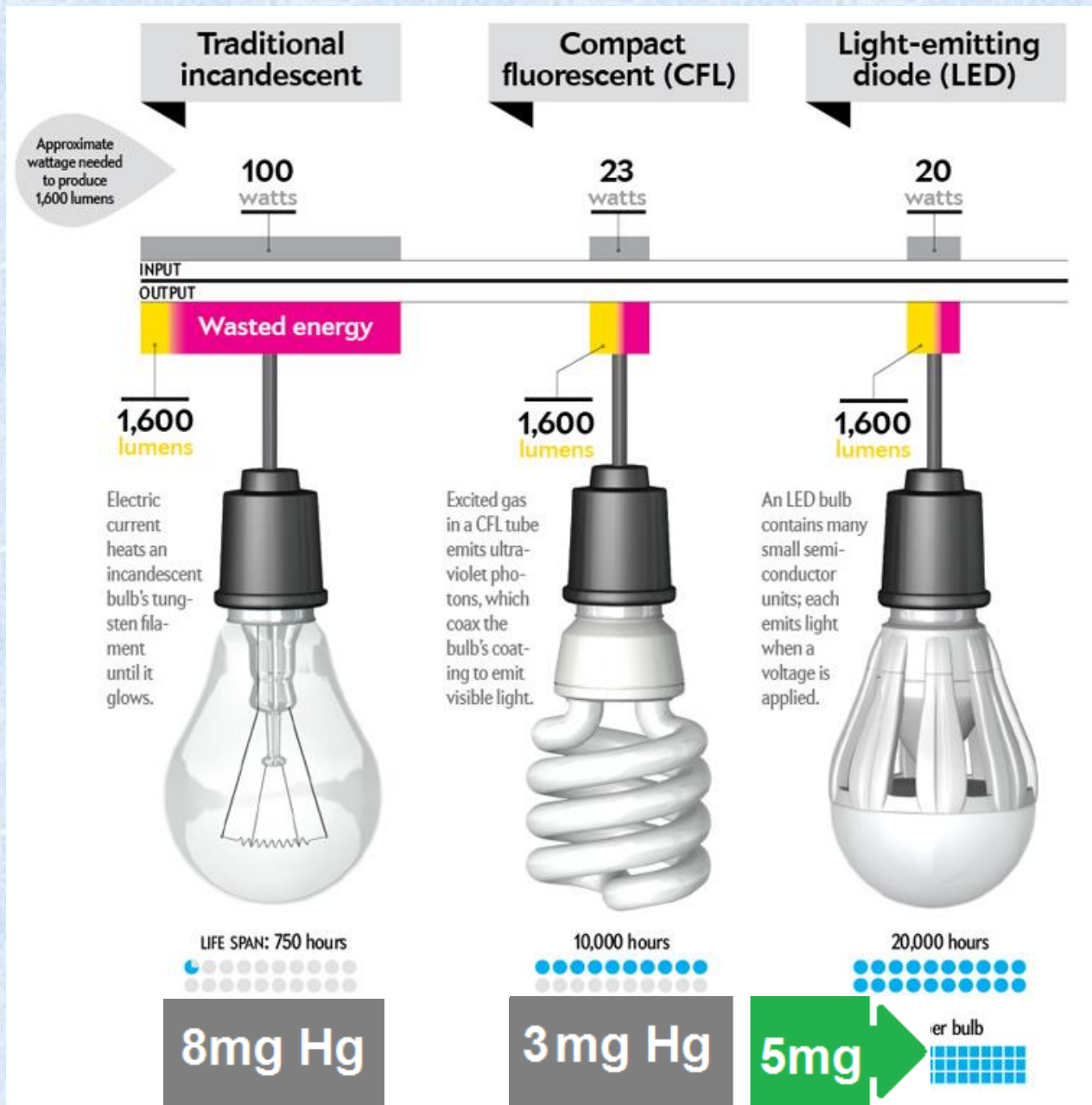


Lamps identified as containing mercury.



What about green tips?





Good & Bad News



Inform Your Residents



An incandescent light bulb produces light by heating a filament wire to a high temperature until it glows.

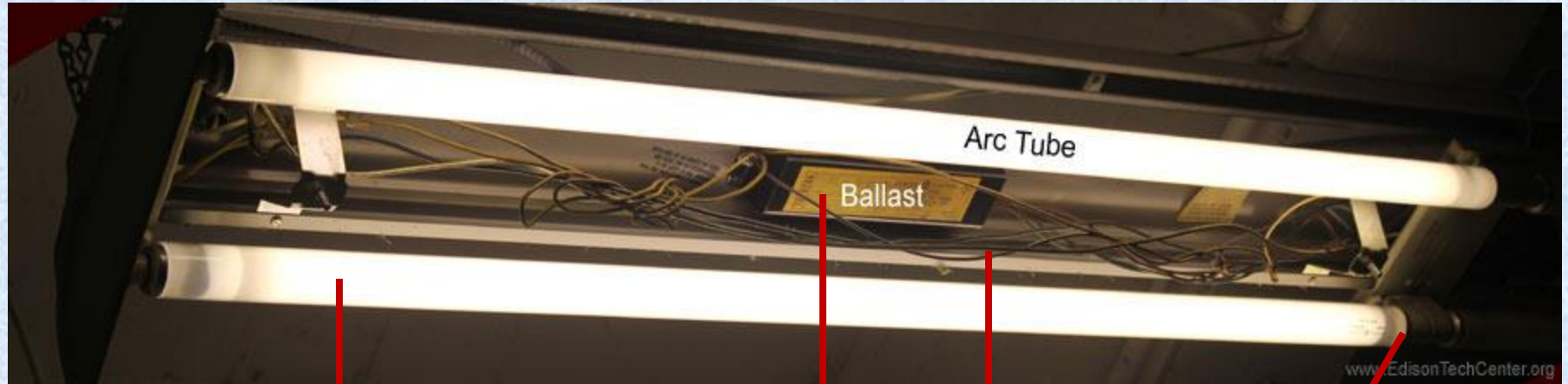


A CFL contains a mixture of argon and mercury gases that produces invisible ultraviolet light (UV) when the gas is excited by electricity.



An LED contains electrons that recombine with electron holes, releasing energy in the form of photons and illuminating the bulb.

Where did these things come from?



Bulb Storage





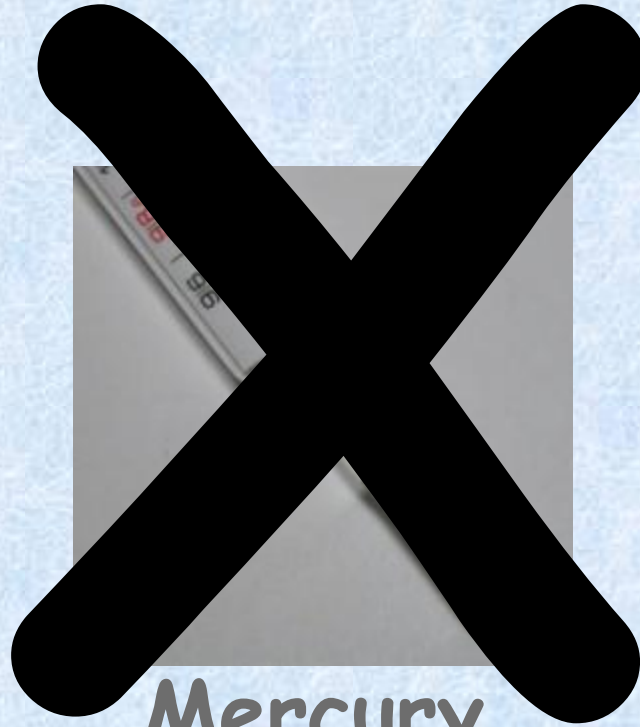
Why not remove the mercury?



Solution?



How do I know?



Mercury

Alcohol

Alcohol

Device Storage Options

Button Cells

Thermostats

Thermometers

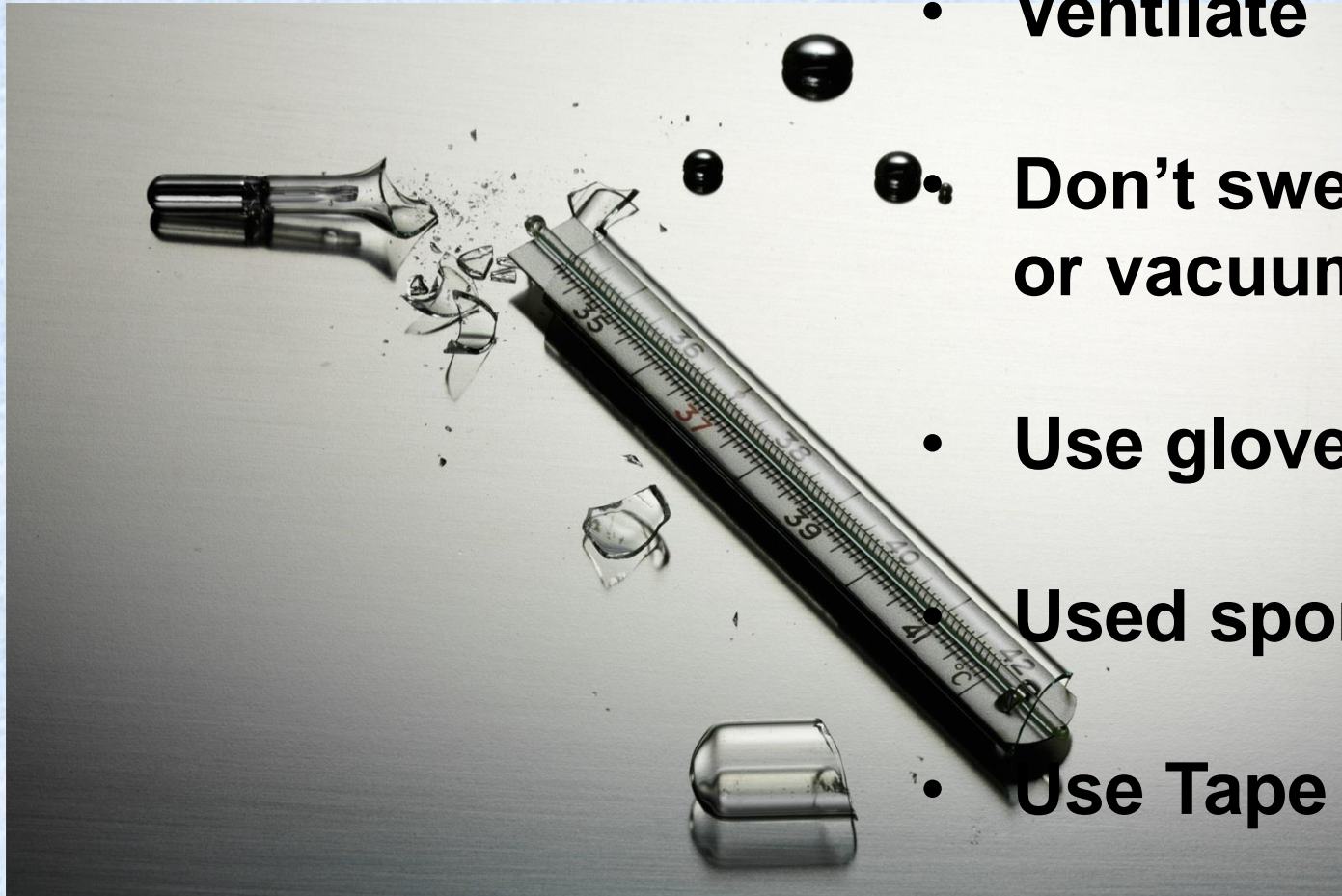
Switches

Relays

Other



Aaaaah CRAP!



- **Ventilate**
- **Don't sweep or vacuum**
- **Use gloves**
- **Used sponge**
- **Use Tape**
- **Bag & HHW**

Batteries

They contain heavy metals such as:

Mercury

Lead

Cadmium

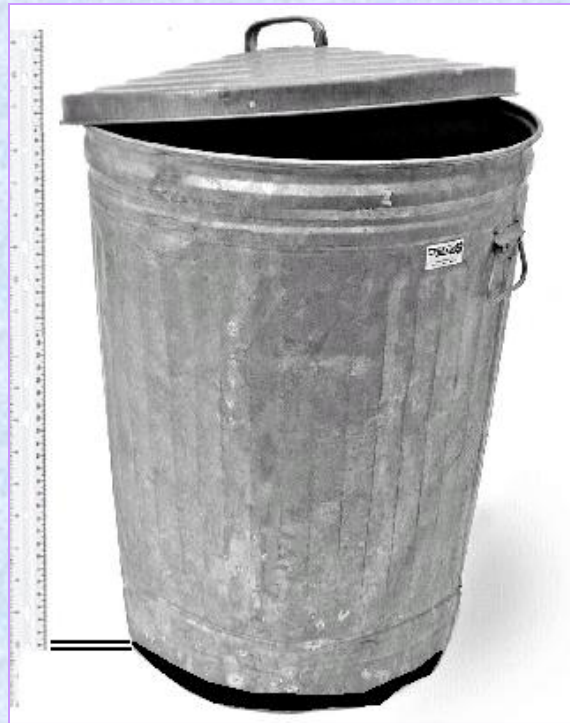
Lithium

They contain corrosive acids

Potential to get into the environment and us

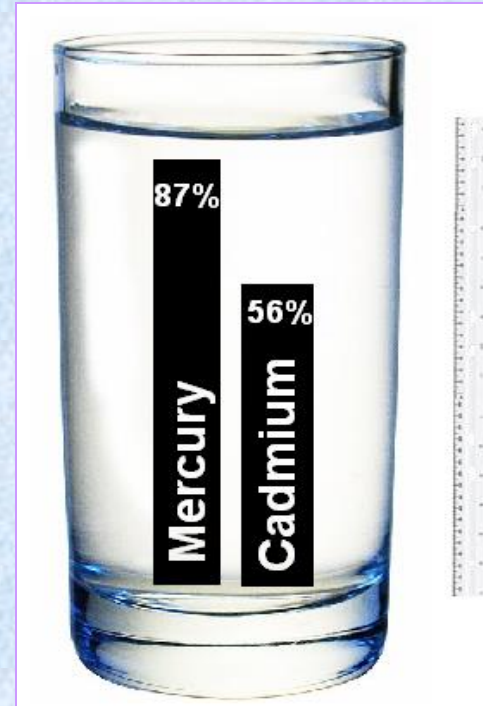


Disproportional Contamination



Batteries are only about ½ of a % of the solid waste-stream.

=



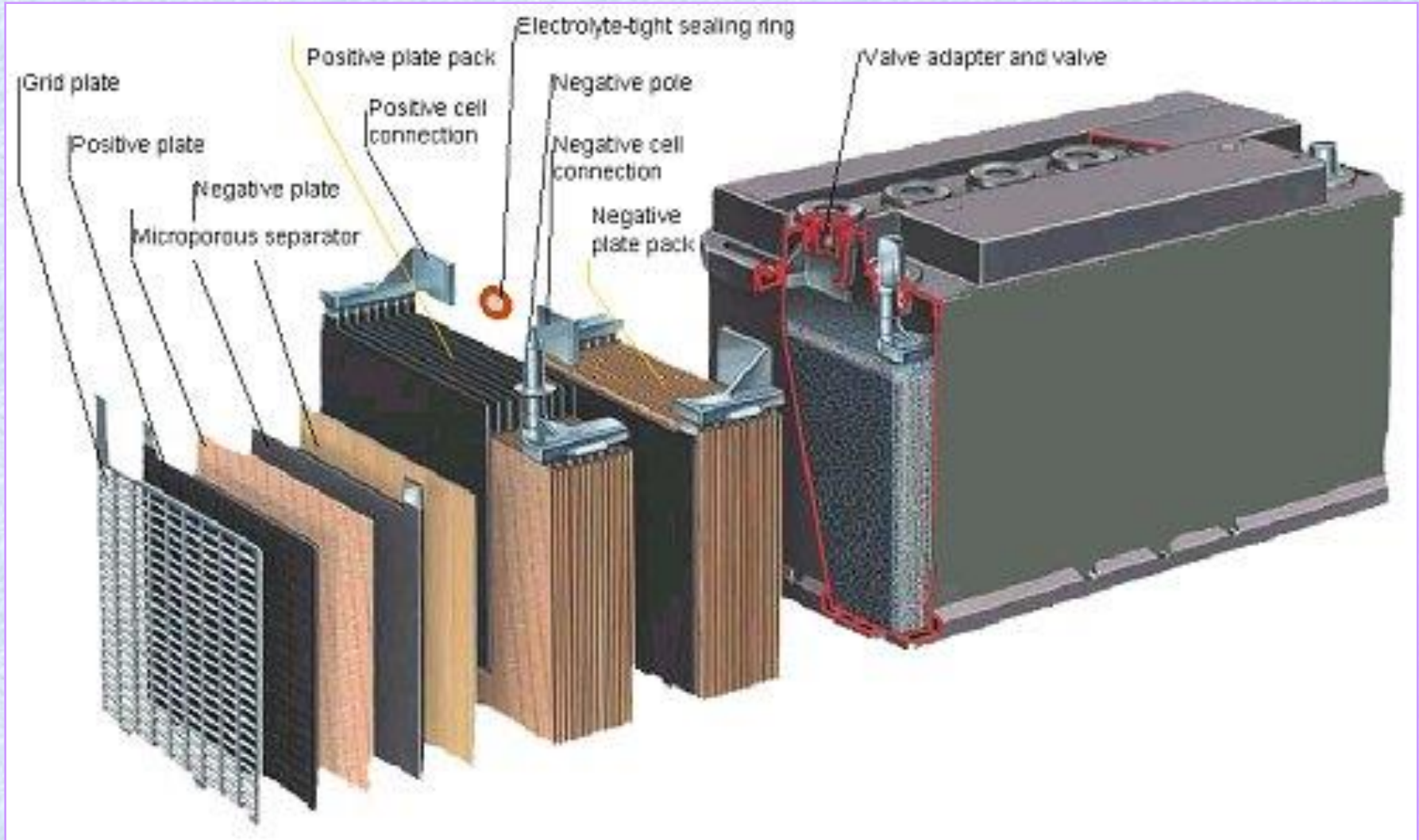
Battery leachate makes up about 87% of mercury and 56% of Cadmium contamination found in drinking water.

Types of Batteries

- Wet Cell Batteries
 - Lead Acid
- Button Cell Batteries
 - Mercury Oxide
 - Zinc Air
 - Lithium
- Dry Cell Batteries
 - Rechargeable
 - Non Rechargeable (alkaline & lithium)



Lead Acid Batteries



Heavy metals in an acid bath

Lead Acid Battery Storage

- Prevent breakage!
- Off the ground
- Under Cover
- Poles Separated
- Cardboard OK



What's Wrong Here?

LEAD ACID BATTERIES

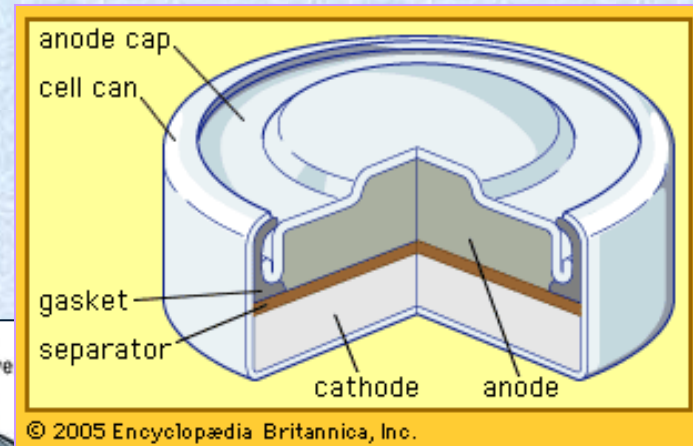


What's Wrong?

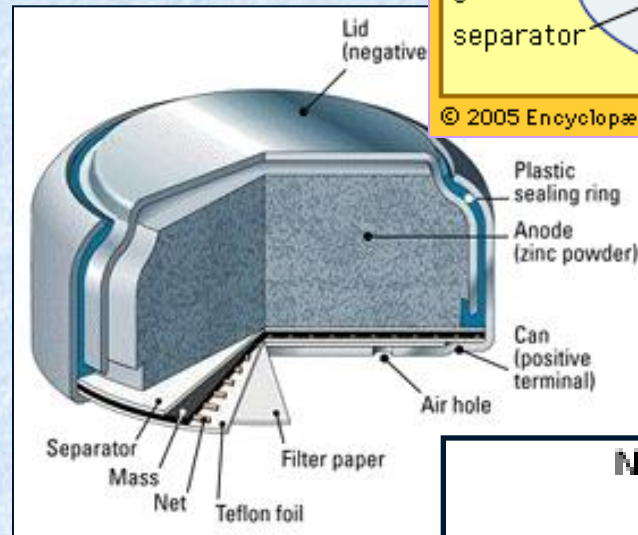


Button Cell Batteries

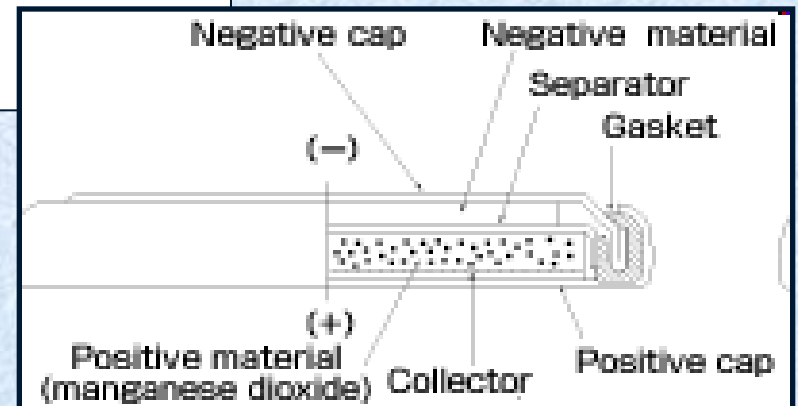
Mercury Oxide



Zinc Air



Lithium





Most of the time...

**It is almost impossible to tell
mercury button cells from non-
mercury button cells**

**Treat them as mercury containing
devices**

Mercury Containing Devices

State Recycling Contract is the best deal

\$85.00/ gallon

A hazardous waste transporter will cost more

Disposal Options for Button Cell Batteries

Button Cells



“Treat them as Mercury Containing Devices”

Rechargeable Batteries

- Ni-Cd (nickel cadmium)
- Ni-MH (nickel metal hydride)
- Li-Ion (lithium ion)



Some are easy to identify...



Others are not...



Then there are these...





Rechargeable Battery Recycling Options



The screenshot shows the Call2Recycle website interface. At the top, there's a header with the logo, navigation links (Recycling Locations, Contact Us, FAQs), a search bar, and a language selector set to "United States (English)". Below the header is a dark blue navigation bar with links: Program Info, Participation, Resources, News Room, Become a Collection Site, and Become an Industry Steward. The main content area is titled "YOU ARE HERE: HOME / BULK SHIPPING". The "BULK SHIPPING" section includes a sub-header "CALL2RECYCLE: EASY BULK-SHIPPING OF YOUR BATTERIES" and a paragraph explaining the program. It also features a "BULK SHIPPING CHECKLIST" with four items, each preceded by a checkbox. The first item is checked, while the others are not.

call2recycle
Recharging the planet. Recycling your batteries.™

Recycling Locations Contact Us FAQs Search CALL2RECYCLE.ORG SEARCH →

CELEBRATING 20 YEARS OF RECHARGING THE PLANET
Choose your region: United States (English)

Program Info Participation Resources News Room Become a Collection Site Become an Industry Steward

YOU ARE HERE: HOME / BULK SHIPPING

BULK SHIPPING

CALL2RECYCLE: EASY BULK-SHIPPING OF YOUR BATTERIES

Call2Recycle® offers an easy [bulk shipping option](#) for collection sites with a high-volume battery recycling program. This program is recommended if your shipments are 500 pounds (lbs.) or more. Call2Recycle will pay your shipping costs to our closest recycling facility.

If you're currently enrolled in our bulk shipping program and have a shipment of 500 lbs. or more, you can use the [Bill of Lading \(BOL\) wizard](#) to create your BOL with our preferred freight partner. [Click here to start.](#)

INTERESTED IN SIGNING UP FOR BULK SHIPPING?

For more information about bulk shipping in the continental United States, contact our [Customer Service Team](#) at 877.723.1297. If you are new to the program and shipping in Canada, [click here.](#)

WHY USE BULK SHIPPING?

It's Easy. Once you are set-up as a participant and are ready to ship your rechargeable batteries, you can log in to our [Bill of Lading wizard](#) to generate the necessary paperwork before arranging a freight carrier pick up with our preferred provider.

BULK SHIPPING CHECKLIST

Here are a few reminders to help you prepare to bulk ship your rechargeable batteries.

- ☒ The batteries being shipped are dry-cell, Ni-Cd, Ni-MH, Ni-Zn, SS/AA/Pb, or Li-Ion rechargeable batteries.
- ☐ No [wet-cell batteries](#) or single-use batteries, including alkaline and lithium primary, are included in the shipment. (Call2Recycle does not accept these battery types at this time.)
- ☐ Each battery being shipped weighs less than 11 lbs. (We can't accept batteries weighing more than 11 lbs. each.)
- ☐ The batteries are packaged to meet U.S. DOT requirements. They are individually bagged or have taped terminals or meet U.S. DOT short-circuit protection requirements.
- ☐ The total shipment weight is 500 lbs. or more.

- Rechargeable batteries
- Cell phones
- Small sealed lead acid batteries
- Cost = 0 (pick up)

<http://www.call2recycle.org>

Non Rechargeable Lithium Batteries

Swallowing lithium batteries: A powerful new danger to kids

May 24, 2010 | 3:29 pm

In the world as seen through the eyes of a child, on
like an "Iron Man" pill. Or swallowing a lithium cell



ght look
energizer

'Button' batteries a growing hazard for children

NEW YORK | Mon May 24, 2010 11:58am EDT

(Reuters Health) - The rate of severe poisonings from battery ingestion among U.S. children has risen in the past 25 years, along with the growing use of lithium "button" batteries in a wide range of consumer products, new research shows.

Tweet 0

Share

Share this

0

Email



May 31, 2010, 5:42 PM

For Very Young, Peril Lurks in Lithium Cell Batteries

By TARA PARKER-POPE

Last fall, 13-month-old Aidan Truett of Hamilton, Ohio, developed what seemed like an [upper respiratory infection](#). He lost interest in food and vomited a few times, but doctors attributed it to a virus. After nine days of severe symptoms and more doctor visits, the hospital finally ordered an [X-ray](#) to look for [pneumonia](#).



Baby Swallows Lithium Battery, Burns Esophagus

Long road to recovery for 18-month-old

Updated: Tuesday, 05 Apr 2011, 9:17 PM MST

Published : Tuesday, 05 Apr 2011, 5:28 PM MST

PHOENIX - How many times have you let your toddler play with the remote control? A Peoria mom is warning parents after it sent her son to the hospital.

18-month-old Emmitt Rauch is now fighting for a normal life. He's on a feeding tube, re-learning to swallow, and undergoing surgery to breathe.

"Sick to my stomach. It took a long time for me not to blame myself about this incident because as mothers

Non Rechargeable Lithium Batteries



Non Rechargeable Alkaline

- **Disposable**
- **Recycling is not cost effective**
- **Mercury removed after 1995**
- **Solid Waste**

Disposal Options for...

Non Rechargeable Batteries

Alkaline

There is no current market on the east coast for recycling non-rechargeable batteries.

- **Solid Waste**

Lithium

**DOT Regulated
Hazardous Material**

- **Handle & store as a HW**
- **Ship as DOT 49 CFR 171-180**
- **Save for HHW**

Cell Phones

Shouldn't cost you anything to recycle!

- Call2Recycle.com
- Local women's Shelters
- Phones for Soldiers
- Many others

Sorting



- **Know the nomenclature**
- **Keep under cover**
- **Keep dry**
- **Have gloves**

Preventing Overloads (and fires)



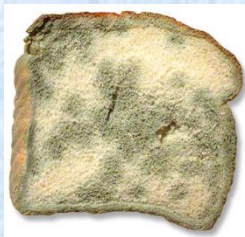
Winter Tape (-10)





F.I.F.R.A.

Federal Insecticide Fungicide & Rodenticide Act



Pesticides have the Toughest Universal Waste Rules

- **Designed to intentionally kill**
- **In a form that can easily get:**
 - **Moved**
 - **Inhaled**
 - **Ingested**
 - **Soaked into your skin**
 - **Dissolved**



Toughest Universal Waste Rules

- More likely to be destroyed than recycled
- Rules are designed more for large-scale collections



Rules for Certain Pesticides

Which ones?



Those that are registered with EPA's FIFRA

Those that make a claim fall under Rule 52b

Those that have been recalled or suspended (DDT)

Contact your state's Dept of Agriculture for the most up-to-date list

1. Company name
and address

Produced for:

ARYSTA LIFESCIENCE NORTH AMERICA, LLC

15401 Weston Parkway, Suite 150

Carv. NC 27513

2. EPA registration
number

EPA Reg. No. 66330-367

EPA Est. No. 51036-GA-001

AD121008

102332

3. EPA establishment
number

NET WEIGHT: 40 LBS



Complete Directions for Use

EPA Reg. No. 524-445

← **trade name**
name product
is sold under

common name →
identifies active
ingredient

AVOID CONTACT OF HERBICIDE WITH FOLIAGE, GREEN STEMS, EXPOSED NON-WOODY ROOTS OR FRUIT OF CROPS (EXCEPT AS SPECIFIED FOR INDIVIDUAL ROUNDUP READY® CROPS), DESIRABLE PLANTS AND TREES, BECAUSE SEVERE INJURY OR DESTRUCTION MAY RESULT.

2004-1

Not all products recommended on this label are registered for use in California. Check the registration status of each product in California before using.

Read the entire label before using this product.

Use only according to label instructions.

It is a violation of Federal law to use this product in any manner inconsistent with its labeling.

Read the "LIMIT OF WARRANTY AND LIABILITY" statement at the end of the label before buying or using. If terms are not acceptable, return at once unopened.

THIS IS AN END-USE PRODUCT. THIS COMPANY DOES NOT INTEND AND HAS NOT REGISTERED IT FOR REFORMULATION. SEE INDIVIDUAL CONTAINER LABEL FOR REPACKAGING LIMITATIONS.

1.0 INGREDIENTS

ACTIVE INGREDIENT:

Glyphosate, N-(phosphonomethyl)glycine
in the form of its isopropylamine salt 41.0%

OTHER INGREDIENTS: 59.0%
100.0%

chemical name
describes the active ingredient

PROTECT^{DF}

TURF & ORNAMENTAL FUNGICIDE

A Coordination Product of Manganese and Zinc and Ethylenebisdithiocarbamate.

ACTIVE INGREDIENTS:

A coordination product of Zinc Ion and Manganese Bisdithiocarbamate	75%
Manganese++	15.0%
Zinc++	1.9%
Ethylenebisdithiocarbamate Ion	58.1%

INERT INGREDIENTS	25%
TOTAL	100%

KEEP OUT OF REACH OF CHILDREN

CAUTION

Si usted no entiende la etiqueta, busque a alguien para que se la explique a usted en detalle.
(If you do not understand the label, find someone to explain it to you in detail.)

FIRST AID

- **IF INHALED:** Move person to fresh air. If person is not breathing, call 911 or an ambulance, then give artificial respiration, preferably by mouth to mouth, if possible. Call a poison control center or doctor for further treatment advice.
- **IF ON SKIN OR CLOTHING:** Take off contaminated clothing. Rinse skin immediately with plenty of water for 15-20 minutes. Call a poison control center or doctor for treatment advice.
- **IF IN EYES:** Hold eye open and rinse slowly and gently with water for 15-20 minutes. Remove contact lenses, if present, after the first 5 minutes, then continue rinsing eye. Call a poison control center or doctor for treatment advice.
- **IF SWALLOWED:** Call poison control center or doctor immediately for treatment advice. Have person sip a glass of water if able to swallow. Do not induce vomiting unless told to do so by the poison control center or doctor. Do not give anything by mouth to an unconscious person.
- Have the product container or label with you when calling a poison control center or doctor, or going for treatment.

PRECAUTIONARY STATEMENTS

HAZARDS TO HUMANS AND DOMESTIC ANIMALS.

- **Caution** — Causes moderate eye irritation. Harmful if swallowed, inhaled, or absorbed through skin. Avoid contact with skin, eyes or clothing. Avoid breathing dust or spray mist. Remove contaminated clothing and wash clothing before reuse.

PERSONAL PROTECTION EQUIPMENT (PPE):

- **APPLICATORS AND OTHER HANDLERS MUST WEAR:** Coveralls over long-sleeved shirt and long pants, chemical resistant gloves made from any waterproof material, shoes plus socks, protective eyewear when mixing or loading, chemical-resistant apron when cleaning equipment, mixing or loading. Follow manufacturer's instructions for cleaning/maintaining PPE. If no such instructions for washables, use detergent and hot water. Keep and wash PPE separately from other laundry. When handlers use closed systems, enclosed cabs or aircraft in a manner that meets the requirements listed in the Worker Protection Standard (WPS) for agricultural pesticides (40 CFR 170.240(d)(4-6)), the handler PPE requirements may be reduced or modified as specified in the WPS.



CLEARY CHEMICAL CORPORATION
178 RIDGE ROAD
DAYTON, NJ 08810-1501

EMERGENCY PHONE NUMBERS:
M-F 9AM-5PM ET
800-524-1662 • 732-329-8399
24 Hour CHEMTREC
800-424-9300

EPA Est. No. 33967-NJ1
EPA Reg. No. 1001-77

Accepted: 3/12/04
Replaces: 2/23/98
Version: 5/20/04



Atrapa 5E

INSECTICIDE

ACTIVE INGREDIENT

Malathion: O,O-dimethyl phosphorodithioate of diethyl mercaptosuccinate 56.44%

INERT INGREDIENTS 43.56%

TOTAL 100.00%

One Gallon of Atrapa 5E Contains 5 Pounds of Malathion

KEEP OUT OF REACH OF CHILDREN CAUTION STATEMENT OF PRACTICAL TREATMENT Organophosphate

IF SWALLOWED: Call a physician or Poison Control Center. Drink 1 or 2 glasses of water and induce vomiting by touching the back of throat. Do not induce vomiting or give anything by mouth to an unconscious or consulting person.

IF ON SKIN: Wash with soap and water.

IF INHALED: Remove victim to fresh air. Apply artificial respiration if indicated.

IF IN EYES: Flush eyes for at least 15 minutes with water. Call physician immediately.

For medical emergencies involving this product, call toll free 1-800-237-1854.

(See Label for Additional Precautions and Directions for Use)

MANUFACTURED FOR:
GRIFFIN L.L.C.
VALDOSTA, GA 31601

Specimen Label

EPA REG. NO. 1812-406

GRAIN CROPS

Barley, Corn, Wheat: Cereal Leaf Beetle - 1½ pints.

Barley, Rye, Wheat, Oat: English Grain Aphid, Greenbug, Grasshopper - 1½ pints. *Make full coverage to hatching areas when nymphs are young. Armyworm - 2 pints.

GRAIN (Corn, Barley, Oat, Rye, and Wheat) - RESIDUAL SPRAY BEFORE STORING: For walls, floors, and machinery in grain elevators, in treating truck beds, box cars, and ship holds before loading grain, use 1 gallon per 25 gallons of water. Make thorough application. Before applying spray, clean elevators, boxcars, truck beds, etc. thoroughly. Remove and burn all sweepings and debris.

GARLIC, LEEK, SHALLOT: Aphid, Thrip - 1½ to 2 pints. Apply uniformly over soil around base of plant. Do not apply within 3 days of harvest.

LENTIL: Cowpea Aphid, Pea Aphid - 1½ pints. Do not apply within 3 days of harvest. **Note:** Do not graze or feed treated crop foliage to livestock.

MUSHROOM: Mite - 2½ pints per 130 gallons OR 1 tablespoon per 100 square feet of bed. **Phorid and Sclerid Fly** - 2½ pints per 130 gallons or 1 tablespoon per 100 square feet of bed. Make thorough application as soon as possible after picking. Repeat applications as necessary, usually twice a week. Do not apply within 1 day of harvest.

ONION: Thrip - 1½ pints. **Onion Maggot** - 2½ pints. Do not apply on green onions within 3 days of harvest.

PEA: Alfalfa Looper, Celery Looper - For control of loopers, Atrapa 5E should be used in combination with other recommended insecticides. Do not apply within 3 days of harvest. **Note:** Do not graze or feed treated crop foliage to livestock.

OKRA: APHID - 1½ pints. **Japanese Beetle** - 2 pints. Do not apply within 1 day of harvest.

PEPPER: Aphid - 1 pint. **Pepper Maggot** - 2½ pints. Do not apply within 3 days of harvest.

POTATO: Aphid, Mealybug, Leafhopper - 2 pints. **False Chinch Bug** - 1½ pints. **Mealybug** - 2 to 2½ pints. May be applied on the day of harvest.

BEET (Table & Garden): Aphid - 1½ pints to 2 pints. If tops are to be used as feed, do not apply within 7 days of harvest.

HORSERADISH, PARSNIP: Aphid - 1½ to 2 pints. Apply uniformly over soil around base of plants.

RADISH, SALSIFY: Aphid - 1½ to 2 pints. Do not apply within 7 days of harvest.

RUTABAGA: Aphid - 1½ pints. Do not apply within 3 days of harvest.

SWEET POTATO: Leafhopper - 1½ to 2 pints. **Morningglory Leafminer** - 2½ to 3 pints. Do not apply within 3 days of harvest.

APRICOT: Codlin Moth, Orange Tortrix, Terrapin Scale, Soft Brown Scale, Aphid - 1½ to 2 pints. Do not apply within 7 days of harvest.

AVOCADO: Latania Scale, Greenhouse Thrip, Omnivorous Looper, Orange Tortrix, Soft Brown Scale - 1½ pints. Do not apply within 7 days of harvest.

AVENGE®

wild oat herbicide

FOR USE IN BARLEY AND WHEAT

ACTIVE INGREDIENT:	
difenzoquat methyl sulfate	31.2%
INERT INGREDIENTS	
	68.8%
TOTAL	100.0%

EPA Reg. No. 241-266

**KEEP OUT OF REACH
OF CHILDREN
DANGER!
¡PELIGRO!**

Si usted no entiende la etiqueta, busque a alguien para que se la explique a usted en detalle. (If you do not understand this label, find someone to explain it to you in detail.)

STATEMENT OF PRACTICAL TREATMENT

If in eyes: Hold eyelids open and flush with a steady, gentle stream of water for 15 minutes. Get medical attention.

If swallowed: Call a doctor or get medical attention. Do not induce vomiting. Drink promptly a large quantity of milk, egg white, gelatin solution, or if these are not available, large quantities of water. Avoid alcohol.

If on skin: Wash with plenty of soap and water. Get medical attention.

If inhaled: Remove victim to fresh air. If not breathing, give artificial respiration preferably mouth-to-mouth. Get medical attention.

NOTE TO PHYSICIAN: Probable mucosal damage may contraindicate the use of gastric lavage.

In case of an emergency endangering life or property involving this product, call collect, day or night, Area Code 201-835-3100.

PRECAUTIONARY STATEMENTS

**HAZARDS TO HUMANS
AND DOMESTIC ANIMALS**

DANGER!

Corrosive: Causes irreversible eye damage. May be fatal if swallowed or absorbed through the skin. **DO NOT** get in eyes, on skin, or on clothing.

Personal Protective Equipment (PPE):

Applicators and other handlers must wear:

- coveralls over short-sleeved shirt and short pants
- waterproof gloves
- shoes plus socks
- protective eyewear
- dust/mist filtering respirator (MSHA/NIOSH approval number prefix TC-21C).

Discard clothing and other absorbent materials that have been drenched or heavily contaminated with this product's concentrate. **DO NOT** reuse them. Follow manufacturer's instructions for cleaning and maintaining PPE. If no such instructions for washables, use detergent and hot water. Keep and wash PPE separately from other laundry.

When handlers use closed systems, enclosed cabs, or aircraft in a manner that meets the requirements listed in the Worker Protection Standard (WPS) for agricultural pesticides [40 CFR 170.240 (d) (4-6)], the handler PPE requirements may be reduced or modified as specified in the WPS.

User Safety Recommendations:

Users should:

- Wash hands before eating, drinking, chewing gum, using tobacco or using the toilet.
- Remove clothing immediately if pesticide gets inside. Then wash thoroughly and put on clean clothing.
- Remove PPE immediately after handling this product. Wash the outside of gloves before removing. As soon as possible, wash thoroughly and change into clean clothing.

ENVIRONMENTAL HAZARDS

DO NOT apply directly to water, or to areas where surface water is present, or to intertidal areas below the mean high water mark. **DO NOT** apply when weather conditions favor run-off and/or drift from target area. **DO NOT** contaminate water when disposing of equipment washwaters.

DIRECTIONS FOR USE

It is a violation of Federal law to use this product in a manner inconsistent with its labeling. **DO NOT** apply this product in a way that will contact workers or other persons, either directly or through drift. Only protected handlers may be in the area during application. For any requirements specific to your State or Tribe, consult the agency responsible for pesticide regulation.

DO NOT apply this product through any type of irrigation system.

This label must be in the possession of the user at the time of pesticide application.

1. RUP statement

RESTRICTED USE PESTICIDE

Toxic to Fish and Aquatic Organisms

For retail sale to and use only by certified applicators, or persons under their direct supervision and only for those uses covered by certified applicator's certification.

2. Product name

Aloft GC G

Insecticide

GROUP **4A** INSECTICIDE

GROUP **3** INSECTICIDE

For contact and systemic insect pest control in turf and landscape ornamentals on golf courses, lawns and landscape ornamentals around residential, institutional, public, commercial and industrial buildings, parks, recreational areas, athletic fields, and sod farms.

DO NOT USE THIS PRODUCT ON GOLF COURSES AND SOD FARMS IN NASSAU COUNTY OR SUFFOLK COUNTY, NEW YORK.

3. Ingredient statement

INGREDIENTS:	By wt.
Active Ingredients:	
Clothianidin*	0.250%
Bifenthrin**	0.125%
Other Ingredients:	99.625%
Total	100.000%

* (E)-1-(2-chloro-1,3-thiazol-5-ylmethyl)-3-methyl-2-nitroguanidine

** 2-methylbiphenyl-3-ylmethyl (1RS,3RS)-3-[(Z)-2-chloro-3,3,3-trifluoroprop-1-enyl]-2,2-dimethylcyclopropanecarboxylate (cis isomers 97% minimum, trans isomers 3% maximum)

4. Child hazard warning statement

**KEEP OUT OF REACH OF CHILDREN
CAUTION**

5. Signal word

See back panel for additional Precautionary Statements and Directions For Use

For Product Use Information, call 1-866-761-9397

6. Net contents/
net weight

Produced for:
ARYSTA LIFESCIENCE NORTH AMERICA, LLC

15401 Weston Parkway, Suite 150

Gary, IN 47832

EPA Reg. No. 66330-367
EPA Est. No. 51036-GA-001
AD121008

102532

NET WEIGHT: 40 LBS



Arysta LifeScience®

ADVANCED LAWN

Bayer Advanced Lawn® All-in-One Weed Killer for Lawns kills both broadleaf and grassy weeds in one step. This convenient formula kills Dandelions, Chickweeds, Clovers, Crabgrass and Nutgrass without harming your lawn. Controlling weeds on your lawn has never been easier.

LOT 4 75 0308

READ THE LABEL FIRST!

QUICK FACTS

- Kills Lawn Weeds plus Crabgrass in One Step
- Won't Harm Your Lawn
- Treats Up To 10,667 Sq. Ft.

OPN
Resealable Lid
for Directions
Precautions



KILLS

Broadleaf Weeds: Dandelion, Chickweed, and Clovers

Grassy Weeds: Crabgrass, Nutgrass/Nutsedge

AND over 200 other listed weeds

CheckMate® LBAM-F

A BIOCHEMICAL FOR MATING DISRUPTION OF
LIGHT BROWN APPLE MOTH (*Epiphyas postvittana*)

For use on all agricultural crops, all orchards, all nurseries, all parks and forests, all residential and municipal areas, all recreational and non-crop areas

This is an unregistered product approved under Section 18 of FIFRA
FOR USE ONLY IN THE STATE OF CALIFORNIA

ACTIVE INGREDIENTS:	
(E)-11-Tetradecen-1-yl Acetate	16.90%
(E,E)-9,11-Tetradecadien-1-yl Acetate	0.71%
OTHER INGREDIENTS:	82.39%
TOTAL	100.00%

Keep Out Of Reach Of Children

CAUTION

PRECAUTIONARY STATEMENTS

HAZARDS TO HANDLERS AND APPLICATORS EXPOSED TO THE CONCENTRATED PRODUCT

CAUTION: Potentially harmful if swallowed, absorbed through skin, or inhaled. Causes moderate eye and skin irritation. Avoid contact with skin, eyes and clothing. Applicators should avoid breathing vapor or spray mist. Wash thoroughly with soap and water after handling and before eating, drinking, chewing gum or using tobacco. Remove contaminated clothing and wash before reuse. These precautions are not necessary for persons exposed to the product after it has been diluted and applied according to the Directions for Use.

Personal Protective Equipment (PPE): Applicators and handlers must wear: long-sleeved shirt and long pants, socks, shoes, chemical resistant gloves, and protective eyewear. Follow the manufacturer's instructions for cleaning and maintaining PPE. If no such instructions for washables, use detergent and hot water. Keep and wash PPE separately from other laundry.

USER SAFETY RECOMMENDATIONS

Users should wash hands before eating, drinking, chewing gum, using tobacco, or using the toilet.

Users should remove clothing/PPE immediately if product gets inside. Then wash thoroughly and put on clean clothing.

Users should remove PPE immediately after handling this product. Wash the outside of the gloves before removing. As soon as possible, wash thoroughly and change into clean clothing.

FIRST AID STATEMENTS FOR APPLICATORS AND HANDLERS OF THE UNDILUTED PRODUCT

IF SWALLOWED: Call a poison control center or doctor immediately for treatment advice. Have person sip a glass of water if able to swallow. Do not induce vomiting unless told to do so by a poison control center or doctor. Do not give anything by mouth to an unconscious person.

IF IN EYES: Hold eye open and rinse slowly and gently with water for 15-20 minutes. Remove contact lenses, if present, after the first 5 minutes, then continue rinsing eye. Call a poison control center or doctor for treatment advice.

IF ON SKIN: Take off contaminated clothing. Rinse skin immediately with plenty of water for 15-20 minutes.

IF INHALED: Move person to fresh air.

First aid treatment is not necessary for persons exposed to the product after it is diluted and applied according to the Directions for Use.

HOT LINE NUMBER

Have the product container or label with you when calling a poison control center or doctor, or going for treatment. You may also contact 1-866-326-6737 for emergency medical treatment information.

ENVIRONMENTAL HAZARD

For terrestrial uses: For purposes of this Section 18 use only, this product may be applied in riparian habitats, over water that is covered or partially covered by tree canopies, or over uncovered water that is close to such water bodies. Otherwise, do not apply directly to water, or to areas where surface water is present, or to intertidal areas below the mean high water mark. Do not contaminate water when cleaning equipment or disposing of equipment washwaters or rinsate.

MANUFACTURED BY:

Suterra®

Suterra LLC

213 SW Columbia Street
Bend, Oregon 97702-1013
1-866-326-6737

EPA Est. No. 56336-OR-1

Net Contents: 30 fl. oz. (900 ml)
Contains: 5.05 g/L fluid ounce / 0.17 g/L ml

RESTRICTED USE PESTICIDE

ACUTE TOXICITY and GROUND WATER CONTAMINATION

For retail sale to and use only by Certified Applicators or persons under the direct supervision of a Certified Applicator,
and only for those uses covered by the Certified Applicator's certification.



Bayer CropScience

TEMIK® brand 15G Lock 'n Load®

ALDICARB PESTICIDE

CLOSED HANDLING SYSTEM

For Control of Certain Insects, Mites, and Nematodes

ACTIVE INGREDIENT: Aldicarb [2-methyl-2-(methylthio) propionaldehyde O-(methylcarbamoyl)oxime] 15%

INERT INGREDIENTS: 85%

EPA Reg. No. 264-330

EPA Est. No. 264-GA-01



KEEP OUT OF REACH OF CHILDREN

DANGER POISON

PELIGRO



Si usted no entiende la etiqueta, busque a alguien para que se la explique a usted en detalle.
(If you do not understand the label, find someone to explain it to you in detail.)

For MEDICAL And TRANSPORTATION Emergencies ONLY Call 24 Hours A Day 1-800-334-7577

For PRODUCT USE Information Call 1-866-99BAYER (1-866-992-2937)

FIRST AID

IF SWALLOWED:	<ul style="list-style-type: none">• Immediately call a poison control center or doctor for treatment advice.• Do not induce vomiting unless told to do so by a poison control center or doctor.• Have person sip a glass of water if able to swallow.• Do not give anything by mouth to an unconscious person.
IF IN EYES:	<ul style="list-style-type: none">• Hold eye open and rinse slowly and gently with water for 15-20 minutes.• Remove contact lenses, if present, after the first 5 minutes, then continue rinsing.• Call a poison control center or doctor for treatment advice.
IF ON SKIN OR CLOTHING:	<ul style="list-style-type: none">• Take off contaminated clothing.• Rinse skin immediately with plenty of water for 15-20 minutes.• Call a poison control center or doctor for treatment advice.
IF INHALED:	<ul style="list-style-type: none">• Move person to fresh air.• If person is not breathing, call 911 or an ambulance, then give artificial respiration, preferably mouth-to-mouth if possible.• Call a poison control center or doctor for further treatment advice.
For MEDICAL Emergencies Call 24 Hours A Day 1-800-334-7577.	
Have the product container or label with you when calling a poison control center or doctor or going for treatment.	

Aldicarb is a N-methyl carbamate.



Phaser® 50WSB Insecticide

For Agricultural or Commercial use Only

NOT FOR USE IN CALIFORNIA

ACTIVE INGREDIENT: Endosulfan (hexachlorocycloheximethano-2,4,3-benzodioxathiepin-3-oxide)..... 50.0%

INERT INGREDIENTS:**..... 50.0%

TOTAL 100.0%

EPA Reg. No. 264-656

EPA Est. No. 67545-AZ-1

THIS PRODUCT IS NOT INTENDED FOR USE IN CALIFORNIA.

For California Use PHASER® 50WSB Insecticide

For Use In California.



KILLS ANTS

REPELS INSECTS

STOPS WEEDS

PREVENTS BED BUGS



Pesticide Lists

- EPA Documents

- “The Rainbow Report” - 1998

- <http://www.epa.gov/oppsrrd1/Rainbow/98rainbo.pdf>

- “Suspension of Registrations Under FIFRA”

- <http://www2.epa.gov/pesticide-reevaluation/suspension-registrations-under-fifra>

- NH Dept. of Agriculture Rules – Pes 701.04

- http://www.gencourt.state.nh.us/rules/state_agencies/pes700.html

Rules for Collecting Pesticides

1. Must be in an appropriate labeled container



Better than this!



Rules for Certain Pesticides

2. Label with The label originally on the package AND labeled as UW or WP...



Rules for Certain Pesticides

3. Stored on an impervious surface

Secondary containment required if near floor drains, sinks or manholes



Rules for Certain Pesticides

4. Equipment required near pesticides

- Fire control
- Spill Control
- Decontamination Equipment



Rules for Certain Pesticides

5. Adequate aisle space

- to respond to emergency
- To find problems (leaks)



Rules for Certain Pesticides

6. Telephone posting

- Local fire dept., 911, or both
- Local police, 911, or both
- DES (271-3899)
- DOS (223-4381)
- Local response team #
- Steps to take in an emergency



Rules for Certain Pesticides

7. Outdoor Storage Requirements

- A barrier (fence, wall) surrounding waste
- Controlled (gated) entry
- Posting that says:

“Danger – Unauthorized Personnel Keep Out”



Rules for Certain Pesticides

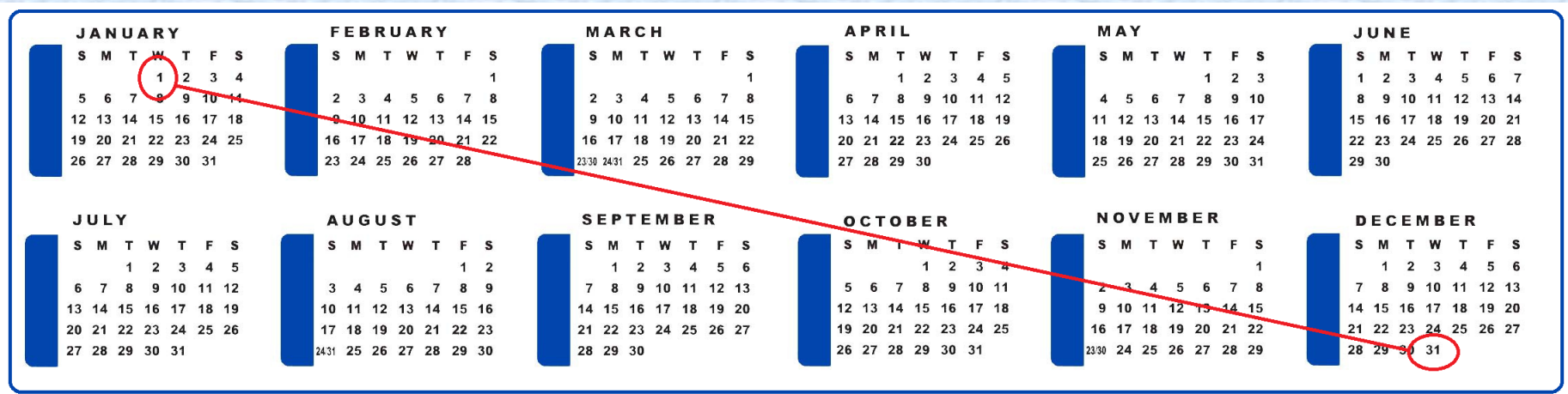
8. Personnel Training!!!

- A formal –written training plan that tells who, what and when
- Trained in hazardous waste management within 6 months
- Can't handle pesticides until trained
- Receive training again every 6 months
- Strict documentation of training records



UNIVERSAL WASTE MANAGEMENT STANDARDS

Do not store for more than one year.
Be able to prove you are shipping these off-site



Help!



- Hazardous Waste Hotline
 - 1-866-HAZWAST
 - 1-866-429-9278